

## TOOLS NEEDED TO INSTALL DROPOUT SPICE RACK/STORAGE SYSTEM – 8004

#2 PHILLIPS SCREW DRIVER

#1 SQUARE DRIVE

3/16" HEX DRIVER WITH 9" MINIMUM EXTENSION (attached to back of unit), CONNECTED TO A POWER SCREW DRIVER OR RACHET

TAPE MEASURE

PENCIL

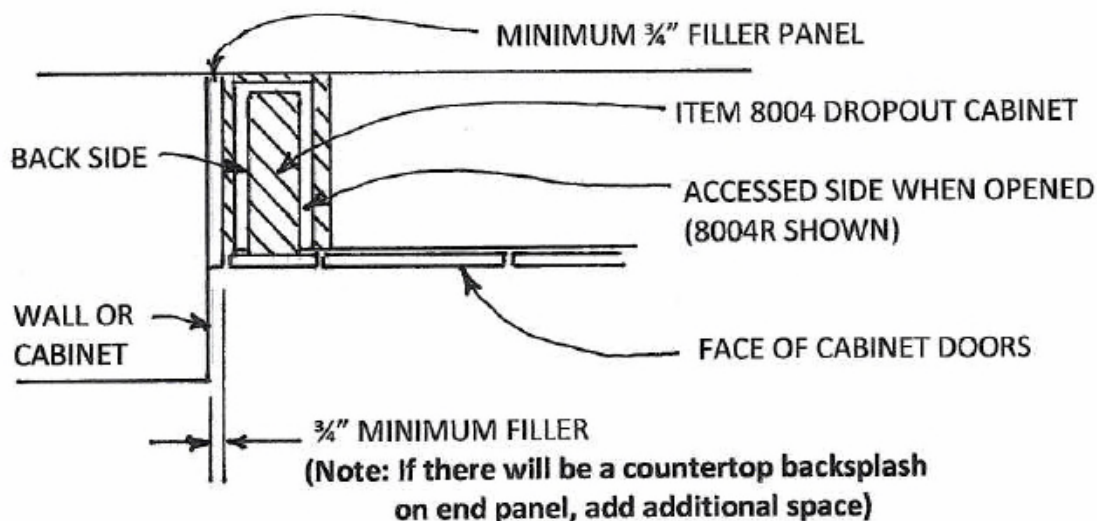
PILOT DRILL (THE SIZE OF DRILL IS DEPENDENT ON CABINET MATERIAL)

---

### DESIGN CONSIDERATIONS FOR PLACEMENT OF UNIT

Do not install open side of this unit any closer than 4 ½" from an exhaust hood or any other obstruction. **Always maintain a minimum of 4 ½" of access clearance!** This is to maintain adequate access to all the contents when racks are filled.

Do not mount door front (customer provided) completely adjacent to a wall or deep cabinet. It is recommended that there be a filler strip or panel (3/4" minimum) between the corner and the door on the Dropout. **See drawing below.**



PLAN VIEW

## **INSTALLATION INSTRUCTIONS EZ INSTALL STORAGE SYSTEM ITEM 8004**

When installing this unit between upper cabinets, first install the upper cabinet that will be to the back side of the storage system (i.e. if you are installing a RIGHT FACING (8002R) unit, then first install the cabinet that is to the LEFT SIDE of the Dropout Storage System location). **Be sure this upper cabinet is installed level, plumb, square and securely!** This cabinet must be strong enough to support the added weight of the Dropout Storage System.

First determine whether you will add a finished bottom to the Dropout Storage System. If you choose NOT to use a finished bottom, place the Dropout cabinet flushed with the bottom and front (Fig 1) of the adjacent cabinet. If you DO choose a finished bottom, you must allow for the thickness of your finished bottom before attaching the Dropout cabinet to the adjacent cabinet. This way, you ensure that the bottoms of the 2 cabinets will finish at the same level (Fig 2).

Next, drill 6-8 holes (Fig 3) through the side of the cabinet where the storage system will be located. With the help of a 2<sup>nd</sup> person or a support structure, place the Dropout cabinet in position against the adjacent cabinet and fasten securely with appropriate screws through the previously drilled holes.

Now, locate and drill at least 4 holes for attachment screws in the next adjacent cabinet (FIG 4). **IMPORTANT! You must FIRST install the adjacent cabinet to the wall BEFORE fastening it to the Dropout Storage System.** Now, place at least 4 screws through the 4 previously drilled holes fastening the Dropout Storage System to the wall cabinets.

**NOTE: BE SURE TO MAINTAIN A 4 3/4" INTERIOR SPACE IN THE DROPOUT CABINET, PARALLEL TOP AND BOTTOM, TO ENSURE PROPER UNOBSTRUCTED MOVEMENT OF THE STORAGE SYSTEM (FIG 5).**

The Dropout cabinet was shipped with a temporary block on the bottom (**do not remove until instructed**) and 2 temporary blocks attached to the door mount adjusters. The door mount adjusters have been preset, but if any further adjustments are necessary, loosen the set screw in each adjuster with the provided hex wrench and adjust the threaded adjusters with a coin, as needed.



At this point, the Dropout Spice Rack/Storage System can now be opened. With a secure grip, gently pull the rack forward and down in one motion to the full opened/down position. While holding the rack securely with one hand, remove the safety stop thumb screw from the lower hole on the upper guide bar (at the backside of the rack) and reinstall the thumbscrew in the top hole (Fig 6) to lock the unit in the fully opened position. Remove interior packing materials. This requires removing the trays to remove the foam padding from behind the trays.

With a #1 square drive, remove the 4 screws from the 2 front cross blocks (save these screws). Do not remove the bottom block from the under the unit.

Now remove the thumbscrew, while holding the rack firmly in the down position. Gently return the rack to the closed position.

The 4 door mount screw locations are now established. Carefully measure these locations (Fig 7) and transfer them to the back of the door that will be used (customer provided). The handle (customer provided) should already be attached to the door before mounting the door on the Spice Rack/Storage System. The door must be a solid panel with a minimum thickness of 11/16". **NOTE: The door and handle should not weigh more than 5 pounds. Overweight doors will greatly reduce the effective capacity of the unit.**

Once again, open the Storage System and reinstall the thumbscrew in the upper guide bar hole. Now, install the door and handle, using the 4 #1 square drive screws that were removed from the front cross blocks. Place the 4 bumper pads (provided) near the 4 corners of the door.

At this point the Dropout Spice Rack/Storage System can hold its own position. Relocate the safety stop thumb screw from the upper guide bar hole to the lower hole (Fig 8) where it will remain for future use.

If you are placing a finished bottom panel on the Dropout Spice Rack/Storage System, we recommend it be attached with construction adhesive and pin nails (Fig 9). Adjust the panel to align with adjacent panels being sure to maintain a 1/8" gap (Fig 10) all the way around to ensure free movement of the storage rack.

## **ADJUSTING FOR WEIGHT OF CONTENTS**

Once the Dropout is filled with the contents that will be stored within, it will need to be adjusted to compensate for the additional load. Using the 3/16" hex drive (provided), rotate the adjuster screw (fig 11)CLOCKWISE to increase the lift strength and COUNTER CLOCKWISE to decrease the lift strength.

The force needed to close the Dropout should be slightly greater than that needed to open it. This will help to compensate for when some contents are removed during use.

Should the user wish to remove more of the contents all at the same time (e.g. for cleaning or filling), the safety stop thumbscrew in the lower hole in the upper guide bar must be relocated to the upper hole and fully installed to hold the Dropout open until the content weight is returned or the lift is readjusted for the change in weight of the contents.



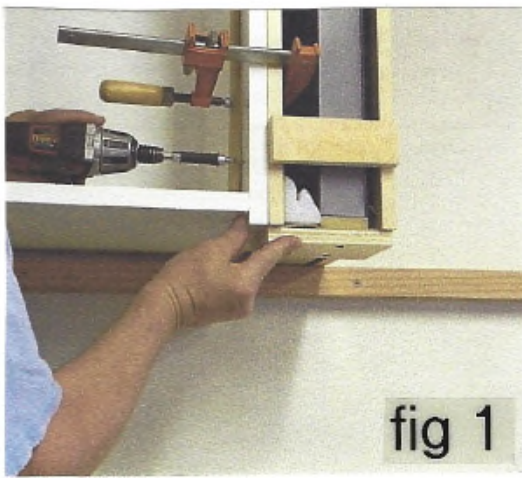


fig 1

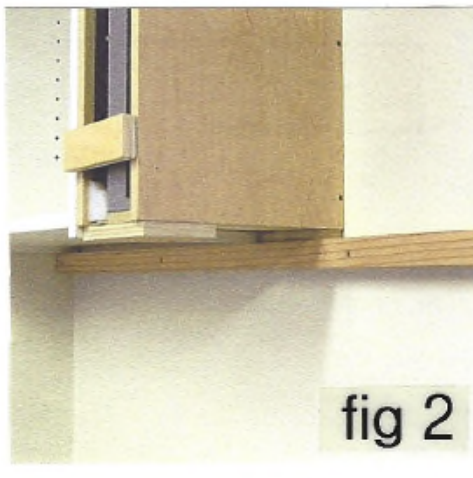


fig 2



fig 3

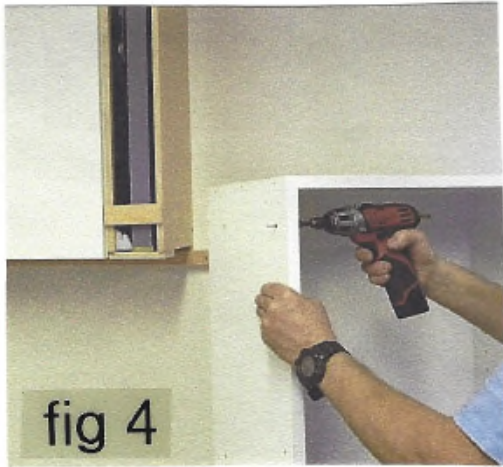


fig 4

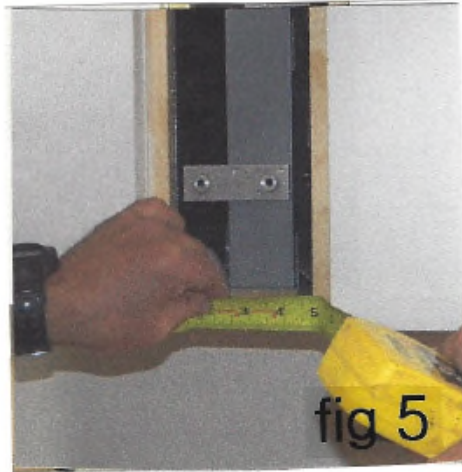


fig 5



fig 6



fig 7



fig 8

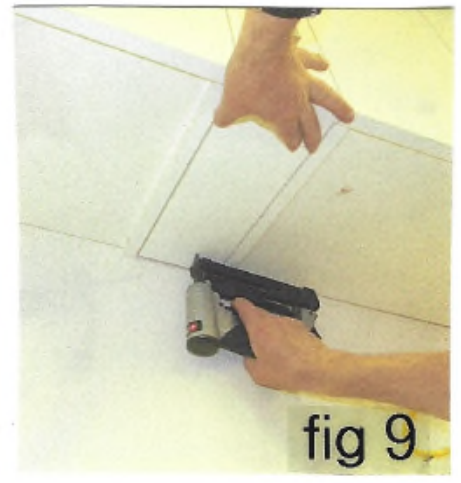


fig 9

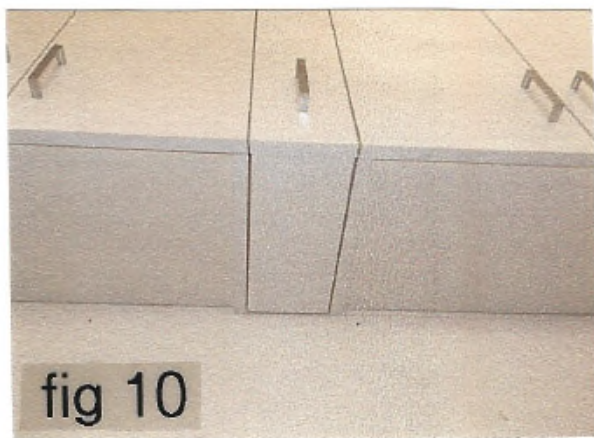


fig 10

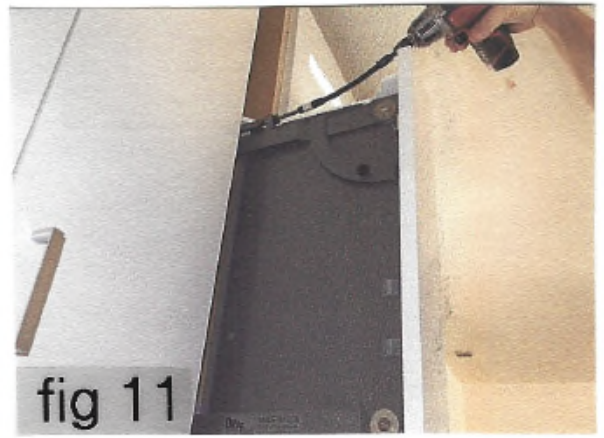


fig 11