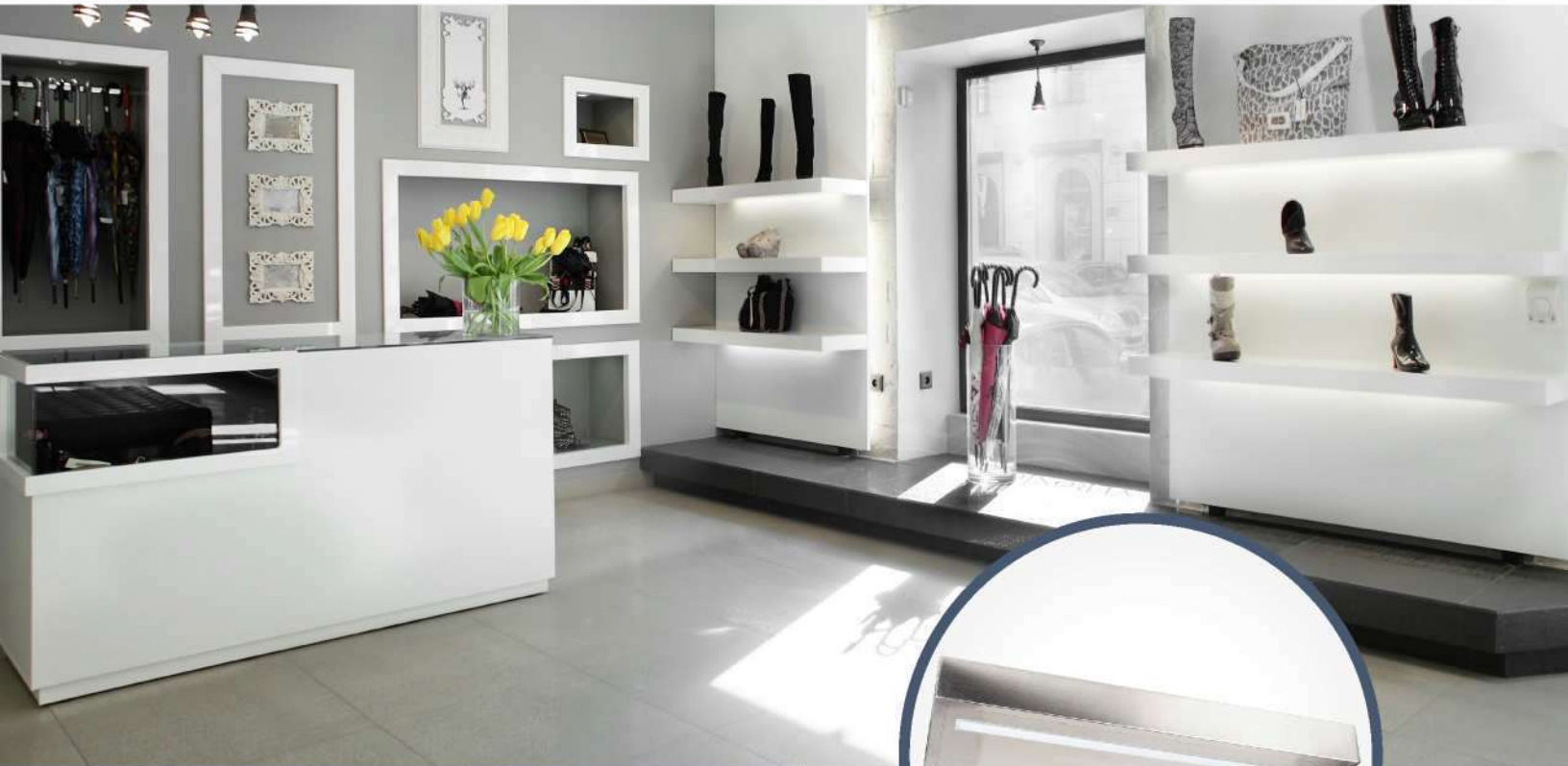




*Federal Brace*  
BEAUTIFULLY CRAFTED CONFIDENT SUPPORT

DECORATIVE SHELF SYSTEMS | *Floating Shelf System with Eco-Lucent*



## FLOATING SHELF SYSTEM WITH ECO-LUCENT LED LIGHTING INSTALLATION GUIDELINES

Every successful installation begins with good planning and action. Do not wait until the last minute to order your Floating Shelf Systems for installation. From time to time stock replenishment may be in process and require a lead time. Make sure that all aspects of the support or stud locations are considered and discussed to ensure that your floating shelf installation will be smooth and that your support products will be sufficient.

*Note that this installation document should not be considered a specific recommendation for your particular application. Federal Brace cannot provide installation guidelines to meet the particulars of every application. This document should be considered a help sheet that provides considerations about the general characteristics of a particular type of support and installation.*

### Characteristics of the Floating Shelf System

The Floating Shelf System comes to you in the selected finish and includes your mounting bracket. It also provides LED accent lighting. The mounting bracket is heavy duty steel powdercoated with a gloss black finish. Eight slots are provided for adjusting the placement as needed. Slots are sixteen inches on center. Arms extend from both ends of the bracket for insertion into the floating shelf box.

The floating shelf has a 100 pound carrying capacity and it is recommended not to exceed this weight to avoid seeing any deflection in the shelf.

### Considerations when Installing Floating Shelf Support Bracket

Whenever installing the Floating Shelf Bracket make sure you are tying into a minimum of 1.75" thick stud wall material. You will want the fasteners to have as much biting material as possible. This will provide a secure fastening of the bracket. Remember a weak support bracket makes for a weak floating shelf.

Once placement is decided, hold the bracket in place and mark your slots. Position the mounting bracket so that the half inch cord hole is on the right. Drill pilot holes, using a drill bit slightly smaller than the fasteners (0.25"). Once the pilot holes are drilled, put the bracket in place and install fasteners.



If you've purchased the Stainless Steel Shelf System, you will need to add the included spacers before fastening the bracket to the wall (Photo A). Put the fasteners through the bracket holes then put the spacers on the fasteners. The spacers should sit between the bracket and wall with the half hole facing up and the long side facing the middle of the bracket (Photo B). The spacers will allow the rear Locking Lip of the stainless steel shelf to sit between the wall and the bracket, the Locking Slot (Photo C).

Prior to tightening fasteners completely, check level across the arms of the bracket. Adjust as needed and make final tightening of fasteners. When the bracket has been fastened tightly, drill a hole through the substrate where the cord hole in the mounting bracket is.

With the bracket securely fastened, add a bead of silicone around the top edge of the arms and back of the bracket. Insert shelf over the arms of bracket. As you move the shelf into its final position, thread the barrel of the LED connector through the cord hole in the bracket and wall and connect the power supply. Once the shelf is in place you will want to wipe it down to get rid of any handprints or other debris.

### Syncing the Eco-Lucent LED System

Once all the bracket is in place, you will want to connect the provided Eco-Lucent power supply in a daisy chain format. To connect and sync the Eco-Lucent LED lights, follow the instructions below.

Final step is to place your decor, enjoy your work and your new floating shelf! We are thankful that you chose to use Federal Brace Floating Shelf Systems in your home or office. Please send us images of your installation. We would love to add your work to our gallery to see Federal Brace products at work.

Also, know that the highest compliment Federal Brace can be given is a reference from our customers to friends and family. If you have enjoyed your buying experience with Federal Brace please let someone know.

PHOTO A - SPACER FOR STEEL SHELF SYSTEM ONLY.



PHOTO B - SPACER FOR STEEL SHELF SYSTEM ONLY.



PHOTO C - SPACER FOR STEEL SHELF SYSTEM ONLY.

