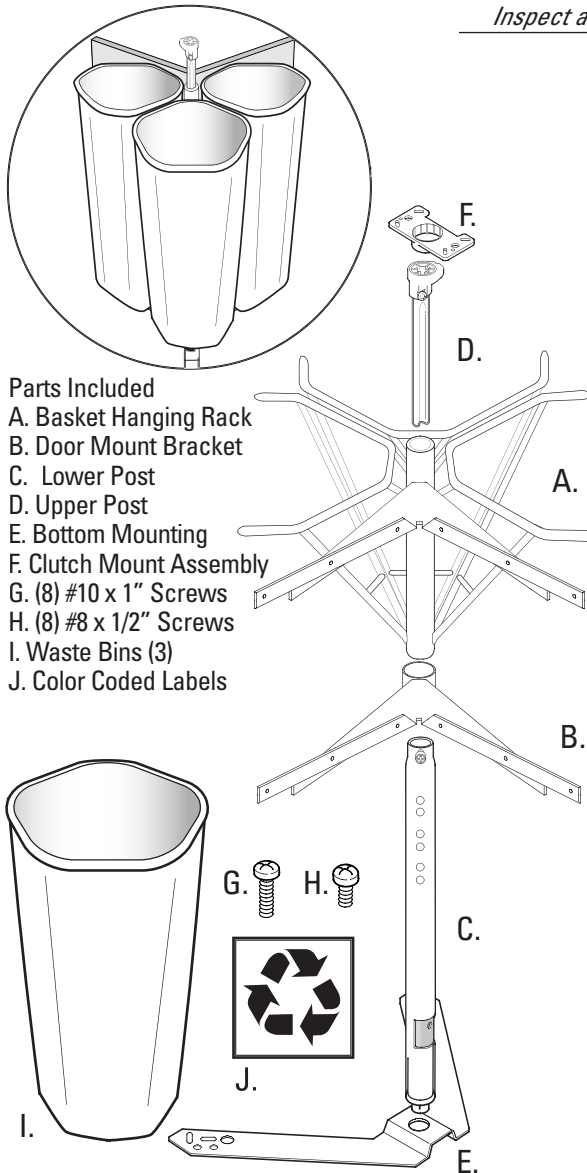


DOOR-MOUNTED CORNER RECYCLING CENTER

Installation Instructions

Inspect all parts and read all instructions prior to beginning assembly and installation.



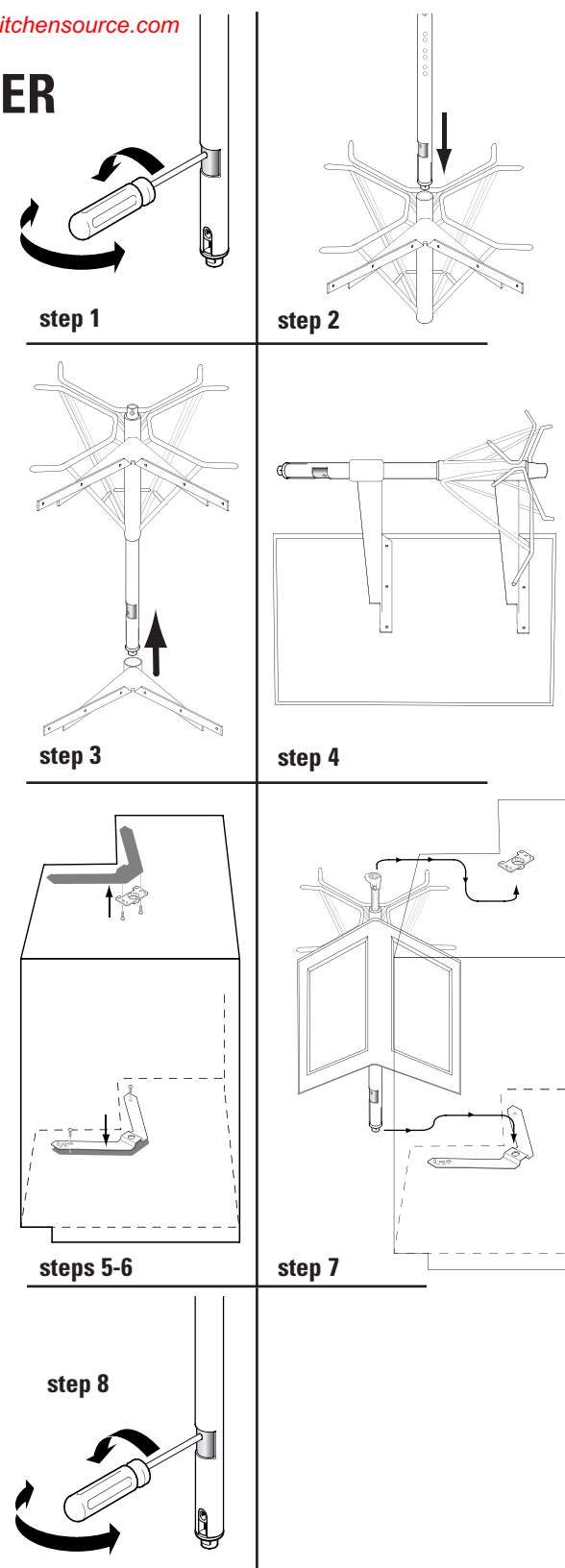
- Parts Included**
- A. Basket Hanging Rack
 - B. Door Mount Bracket
 - C. Lower Post
 - D. Upper Post
 - E. Bottom Mounting
 - F. Clutch Mount Assembly
 - G. (8) #10 x 1" Screws
 - H. (8) #8 x 1/2" Screws
 - I. Waste Bins (3)
 - J. Color Coded Labels

Tools Required

- Phillips head Screwdriver
- Drill with 1/16" (1.5mm) bit for drilling pilot holes
- Tape measure or ruler
- Pencil

- Step 1** Hold lower post and locate height adjusting screw in post raising assembly. To check that jack base is properly located for future vertical adjustment, loosen screw 1 turn. Leave the screwdriver in the screw to use as a handle. Rotate the jack base within the post to the right and to the left. Stop the screw so that the jack base is in the middle of the travel area and tighten 1 turn.
- Step 2** Slide the Basket Hanging Rack (A.) onto the lower post from the bottom (post raising assembly end).
- Step 3** Slide the Door Mount Bracket (B.) onto the lower post from the bottom (post raising assembly end). The Door Mount Bracket will be below the Basket Hanging Rack.
- Step 4** Lay the cabinet door over a sawhorse or similar work stand. Position Recycling Center onto door as they would be in the installed location. Check to see if the faceframe protrudes above the door of the cabinet, then subtract any protrusion and the desired door/frame reveal to get the location of the bottom of the door relative to the bottom of the face of the Door Mount Bracket. Tighten the set screws on the Basket hanging rack and the lower Door Mount Bracket, holding the recycling center in position and tight against the center post. Mark and drill 1/8" pilot holes, 1/4" deep using existing holes in the recycling center as a template. Fasten the recycling center to door using (4) #10 x 1" screws (G.).
- Step 5** Use installation template to mark and drill 1/16" pilot holes in the bottom and top of cabinet interior.
- Step 6** Place Bottom Mounting Bracket (E.) over drilled holes and fasten, using (2) #8 x 1/2" screws (H.). Install the Clutch Mount Assembly (F.) in the same manner using (2) #8 x 1/2" screws (H.).
- Step 7** Using the Lower Post as a handle to keep The Recycling Center from sliding off and making sure the Upper Post is inserted fully into the Lower Post, place the unit into the cabinet. Engage the bottom of the Post Raising Assembly with the Bottom Mounting Bracket. Loosen the set screw that holds the Upper Post in the Lower Post and slide up the Upper Post to Engage the Clutch Mount Assembly. Push the Upper Post in the Clutch Mount Assembly as far as it will go, then back out 3/32" to leave room for rotational adjustment. Tighten the set screw securely with a screwdriver. (Note: DO NOT USE power screwdriver to tighten set screw.)
- Step 8** If cabinet door needs to be raised or lowered to center in the cabinet opening, loosen height adjusting screw 1 turn (leaving screwdriver engaged in screw). Using the screwdriver as a handle, rotate as needed to set the door to the proper height and tighten screw securely. If the Upper Post won't move far enough, the screw on the clamp of the Clutch Mount Assembly can be loosened and the Upper Post moved up or down 1/8" more.
- Step 9** Loosen clamp screw on the Clutch mount Assembly 1 turn. Gently turn the Recycling Center clockwise (push with left hand). When the Recycling Center stops turning easily, return the unit back counterclockwise (push with right hand). Stop turning at the moment the door is perfectly aligned in the opening. Turn the doors back into the cabinet clockwise (push with left hand). Stop turning when you can easily reach the clamp screw on the Clutch Mount Assembly. Retighten clamp screws.

Your installation is complete! Affix the enclosed "Care Instructions" to an inside wall of the cabinet for future reference. Color coded labels may also be applied to bins.



step 1

step 2

step 3

step 4

steps 5-6

step 7

step 8