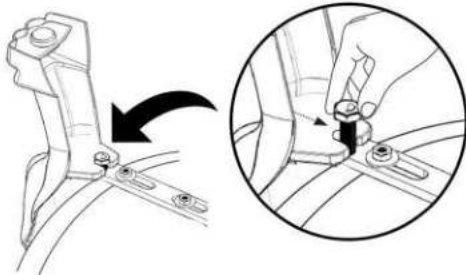
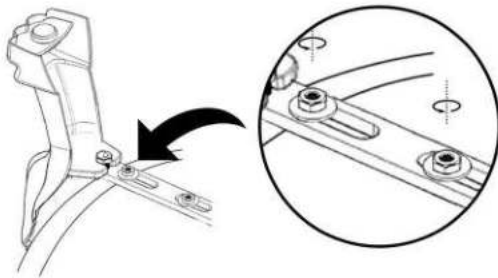


# BATHTUB INSTALLATION

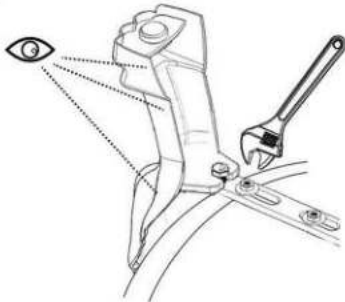
8. Lift up the washer and insert the clawfoot through, making it sit as snug as possible with the exterior of the bathtub.



9. Align and adjust to your preference. If necessary, the metal plate can be moved to help make the claw foot sit as snug as possible with the exterior of the bathtub.

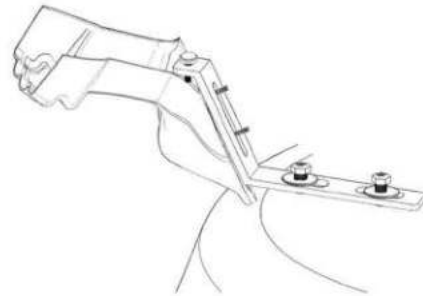


10. Once this is done, tighten the nuts using a wrench.

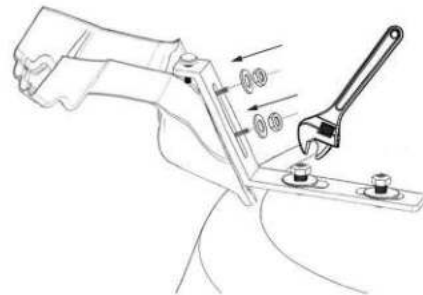


11. Repeat the same procedure for the other 3 legs.

7. Take the clawfoot (Part #7) and align it with the bathtub, ensuring that the top bolts go through the opening and are fit snug with both the bathtub and metal plate.



8. Take 1 washer (Part #5) and place it over the bolt on the metal plate. Then take 1 nut with washer (Part #6) and screw it into the bolt. Do NOT tighten. Repeat the same step for the lower bolt. Make sure that the claw-foot sits snug and is flush with the bathtub. Once this is done, use a wrench to tighten all the nuts.

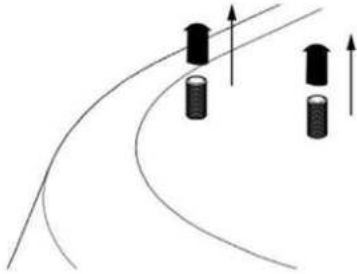


9. Repeat the same procedure for the other 3 legs.

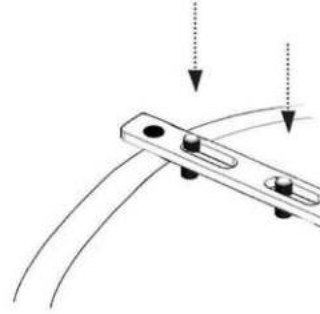
# THE BELOW INSTRUCTIONS ARE FOR THE FOLLOWING CLAWFOOT MODEL THAT HAS 3 PLATES: N-CFL1912-XX

PLEASE FOLLOW THE BELOW INSTRUCTIONS ON ATTACHING THE LONGER PLATE.

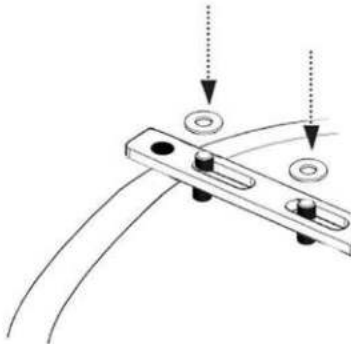
1. Remove the safety caps from the bolts on the bathtub.



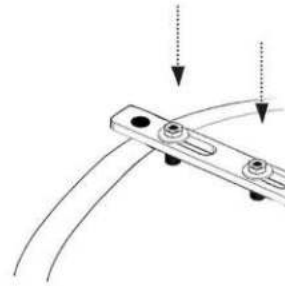
2. Place the metal plate over the two metal bolts.



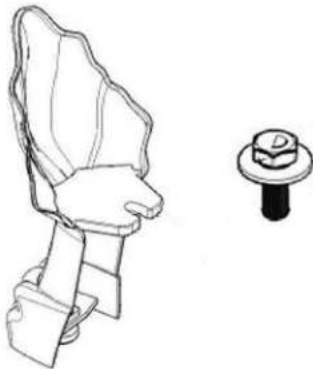
3. Take 2 washers (Part #6) and place 1 over each metal bolt.



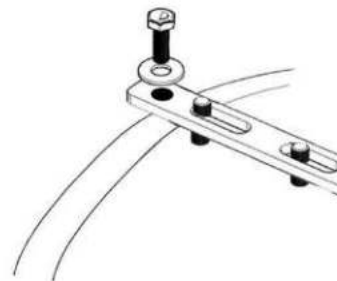
4. Take 2 nuts (Part #2) and place it over each metal bolt. DO NOT FULLY tighten yet as there will be adjustments necessary.



5. Take 1 bolt (Part #4) and 1 washer (Part #5) and 1 clawfoot.



6. Take the bolt and washer and place it through the hole in the metal bar. DO NOT put it through entirely, as space will be needed to slide the clawfoot between the bolt and the plate

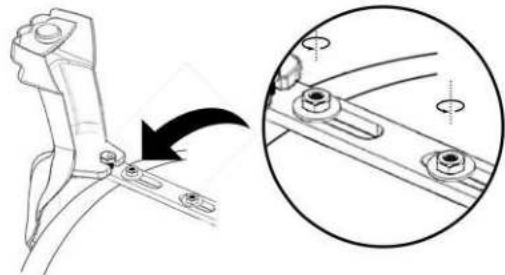
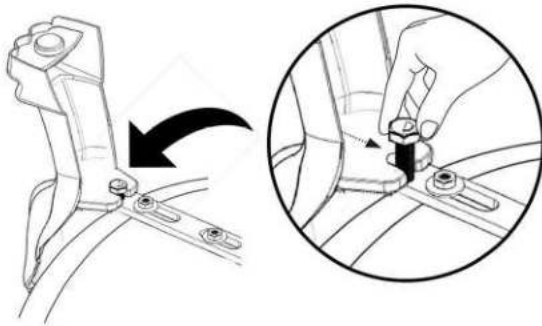


\*\*XX REPRESENTS DIFFERENT COLORS OF THE ITEM

# THE BELOW INSTRUCTIONS ARE FOR THE FOLLOWING CLAWFOOT MODEL THAT HAS 3 PLATES: N-CFL1912-XX

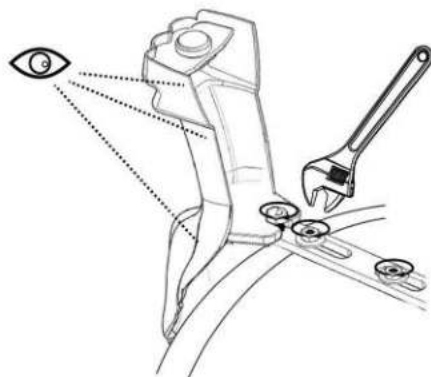
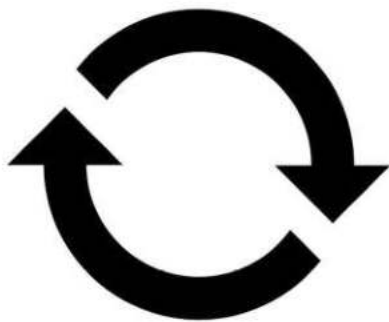
PLEASE FOLLOW THE BELOW INSTRUCTIONS ON ATTACHING THE LONGER PLATE.

7. Take 1 clawfoot, lift the nut and washer, and slide the clawfoot into place. **DO NOT TIGHTEN FULLY.** Adjust the clawfoot positioning as necessary to make the clawfoot flush with the bathtub.
8. If needed, loosen the nuts on the metal plate to be able to adjust the clawfeet. To affix the clawfoot properly, the metal plate can be slide-adjusted and moved to accommodate the correct clawfoot positioning prior to tightening all nuts and bolts.



9. Repeat for the second clawfoot on the other end.

10. Once the clawfeet are positioned properly, tighten all nuts and bolts.

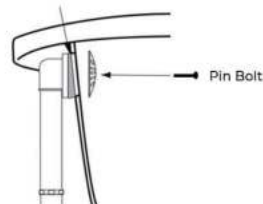


# THE BELOW INSTRUCTIONS ARE FOR INSTALLING DRAIN ASSEMBLY N-DWF-XX

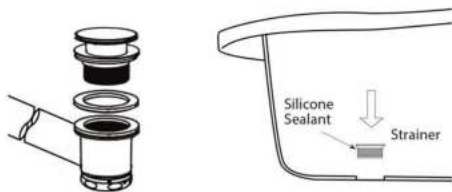
1. Take the overflow ell and unscrew the pin bolt, removing the overflow cover as well.



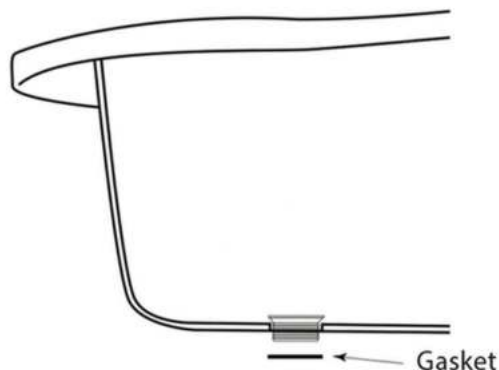
2. Take the tapered rubber gasket and the overflow ell and place it on the overflow hole on the back of the bathtub. Run the pin bolt with the overflow cover through the overflow hole and tighten firmly.



3. Remove the strainer from the drain tee. Take off the larger, lower rubber gasket. Set it aside. DO NOT TAKE OFF THE SMALLER, UPPER GASKET. Place the strainer through the drain hole in the bathtub. Use silicone sealant to seal and ensure a tight connection. DO NOT use plumber's putty.



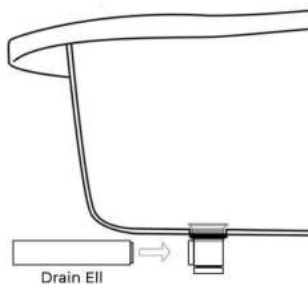
4. Take the lower gasket that was previously removed and re-attach it to the strainer from underneath the bathtub.



5. Screw on the drain tee to the bottom of the drain, making sure the opening of the drain tee is facing outwards to align with the overflow hole.

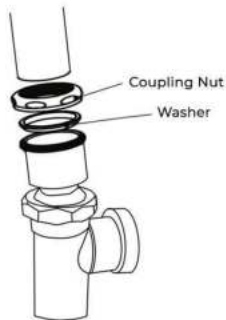


6. Insert the drain ell into the drain tee and screw in tightly. The use of threaded plumbing tape may be necessary at the joint to prevent leakage. This can be done at your discretion.

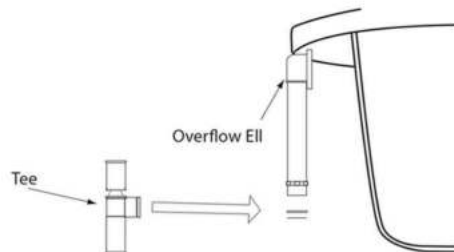


# THE BELOW INSTRUCTIONS ARE FOR INSTALLING DRAIN ASSEMBLY N-DWF-XX

7. Remove the coupling nut and washer from the top of the tee where the ball joint is located.



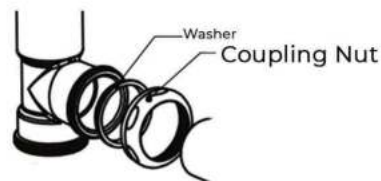
8. Connect the top of the ball joint tee with the overflow ell using the washer and coupling nut. Tighten firmly to have a leakless connection.



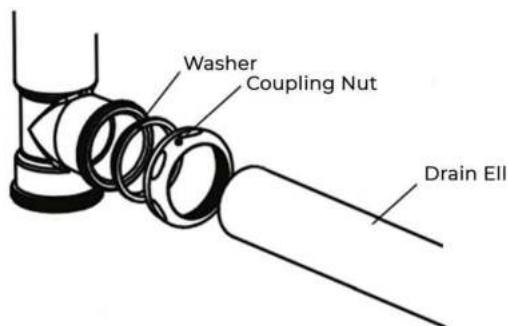
9. Use the ball and joint to angle the drain properly to allow for proper installation in the bathroom.



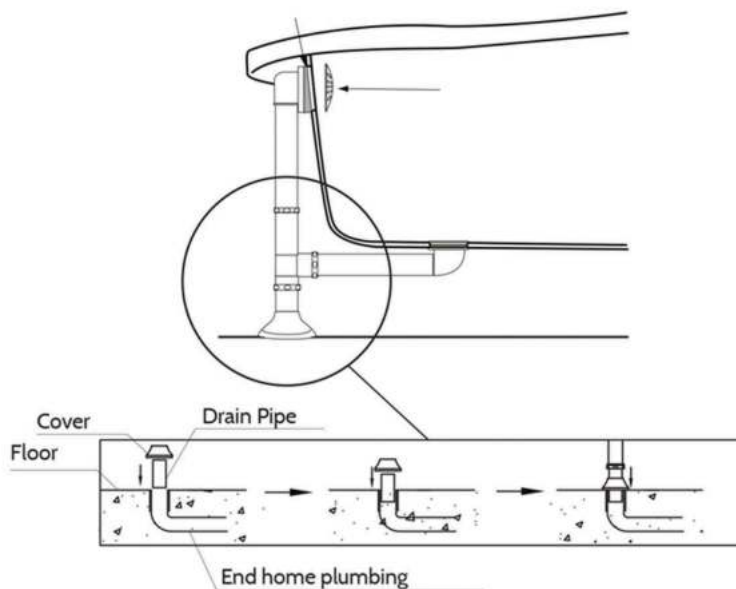
10. Remove the coupling nut and washer from the left-hand side of the drain tee.



11. Connect the drain ell with the left-hand side of the drain tee using the coupling nut and washer. Tighten firmly to have a leakless connection.



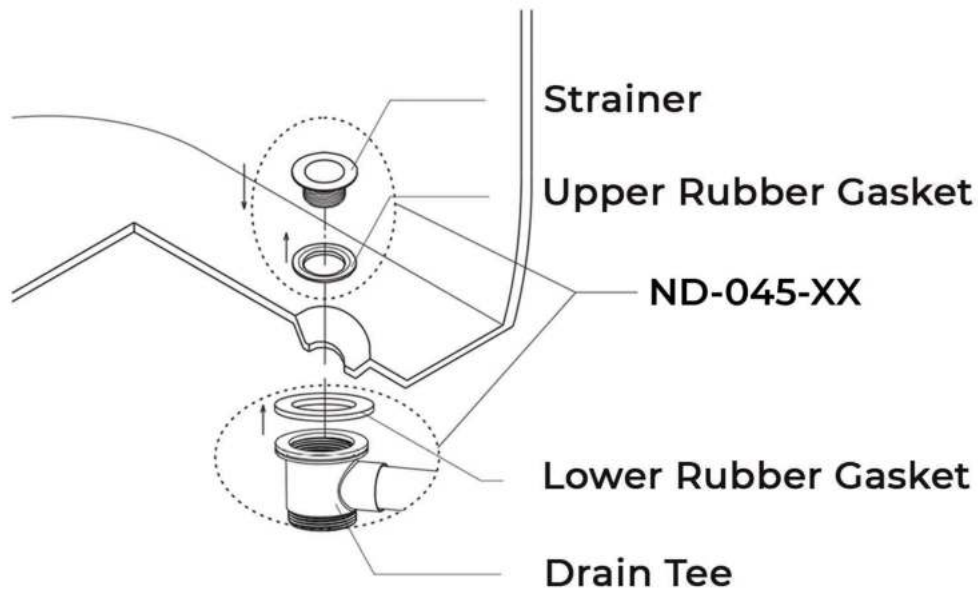
12. Attach the flange to the base of the external drain and proceed to connect the drain to the end home plumbing.



13. Prior to finalizing installation, check all drain connections and fill the bathtub with a minimal level of water to test and ensure that no connections are leaking.

## THE INSTALLATION STEPS BELOW ARE FOR DRAIN MODEL ND-045-XX

---



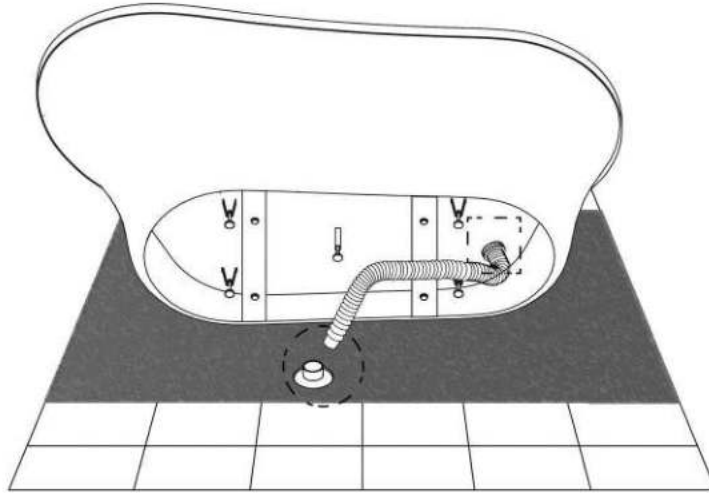
1. Unscrew the strainer from the drain tee.
2. Take off the larger, lower rubber gasket. DO NOT TAKE OFF THE SMALLER, UPPER GASKET.
3. Place the strainer through the hole in the bathtub. Use silicone sealant to seal and ensure a tight connection. DO NOT use plumber's putty.
4. Take the lower gasket that was previously removed and re-attach it to the strainer from underneath the bathtub.
5. Attach the drain tee to the strainer. Tighten using a wrench if necessary.

\*\*XX REPRESENTS DIFFERENT COLORS OF THE ITEM

## THE INSTALLATION STEPS BELOW ARE FOR DRAIN MODEL ND-045-XX

---

6. Proceed to place the provided flexible drain hose into the floor drain.



7. Please note, the flexible hose is a basic way that we provide to connect to the end plumbing in a home. The plumbing installation in every home differs, so please consult with a certified plumber to see if the plumbing in your home is compatible with using a basic flexible hose.

8. Seal the connection by using a PVC pipe sealant to join the parts together.

